

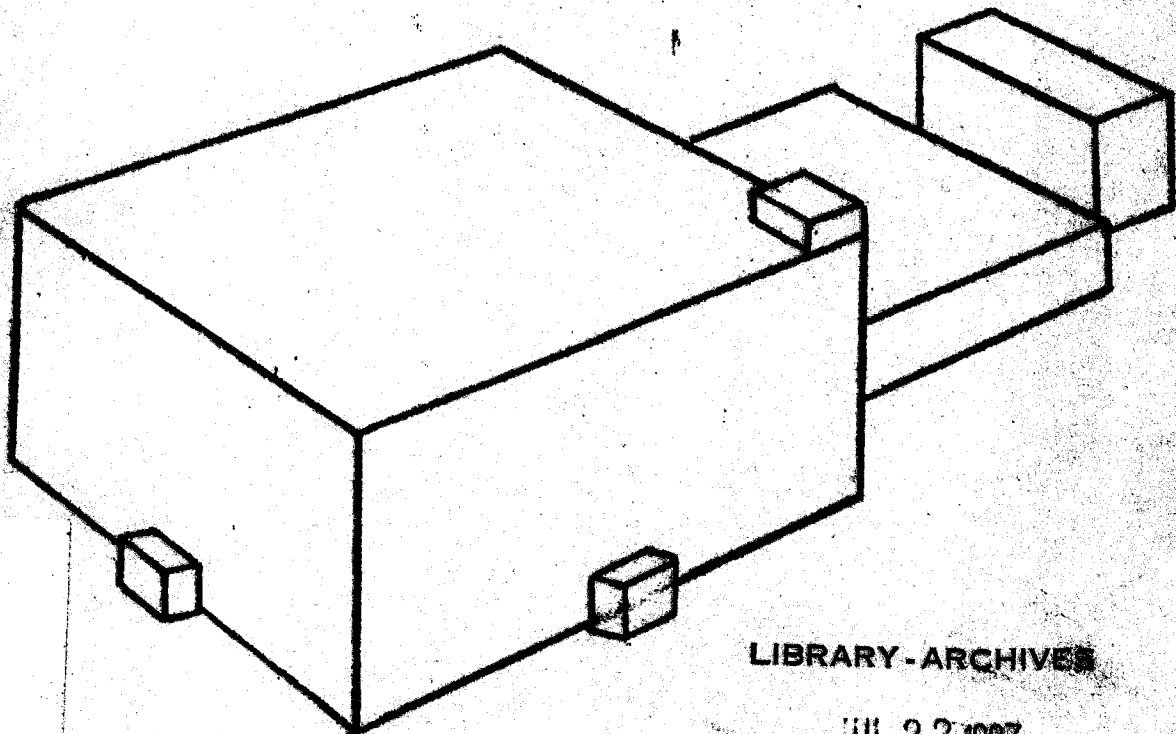
DECLASSIFIED

C 343137A

CONFIDENTIAL

1030  
1415  
1330  
1415

# GUIDE TO MCGUIRE (U)



LIBRARY - ARCHIVES

JUL 22 1987

M.I.T. LINCOLN LABORATORY

Declassification JAW  
EO 13526  
by the Air Force Declassification Office  
Date: 11-16-11 Reviewer# 137

## SAGE SYSTEM DIRECTION CENTER

M.I.T. Lincoln Laboratory

ARCHIVES

COPY

Please Return to

A-082

PF-2203

C 343137A

DECLASSIFIED

GROUP 66, DIVISION 6

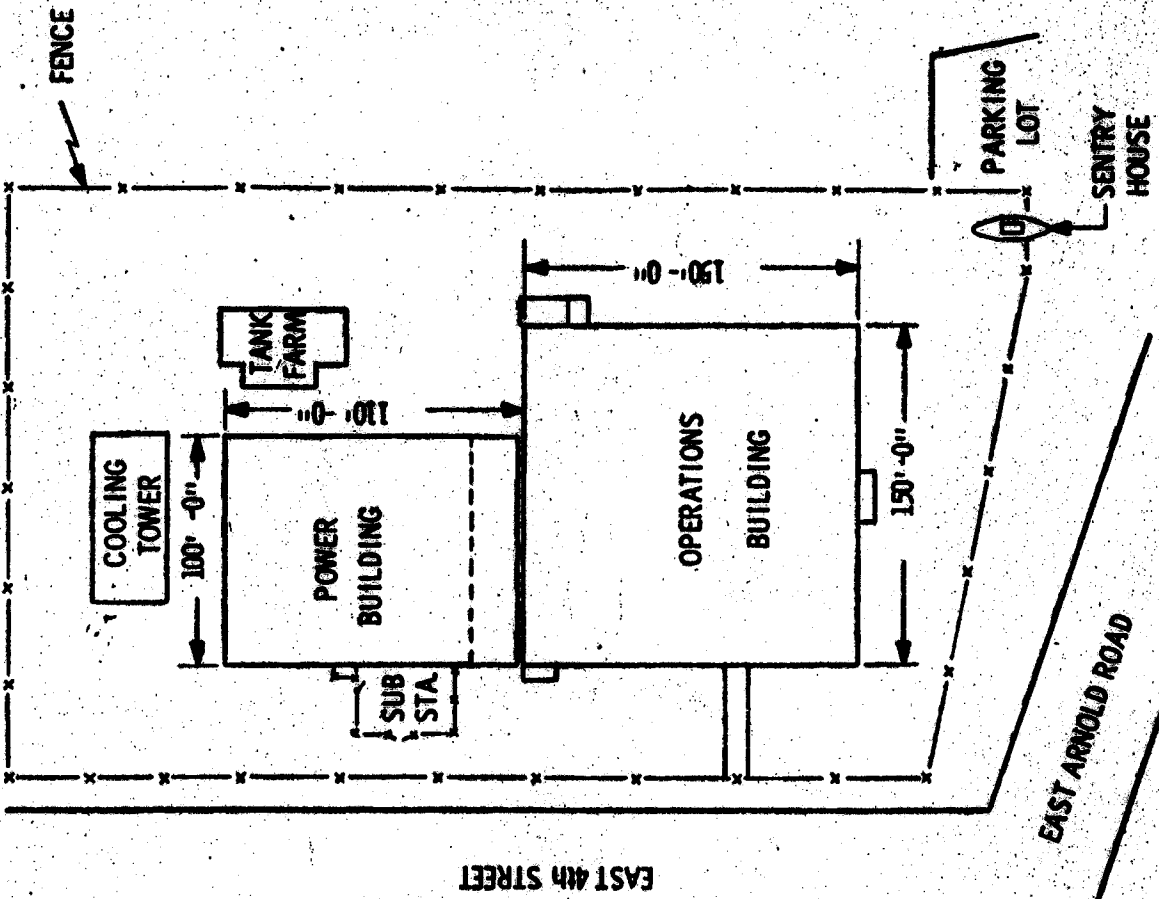
LINCOLN LABORATORY

MASSACHUSETTS INSTITUTE OF TECHNOLOGY

~~CONFIDENTIAL~~

NATIONAL SECURITY INFORMATION  
Unauthorized Disclosure Subject to Criminal Sanctions

UNCLASSIFIED



PLOT PLAN

MCGUIRE DC BUILDINGS

UNCLASSIFIED

1-76048

UNCLASSIFIED

UNCLASSIFIED

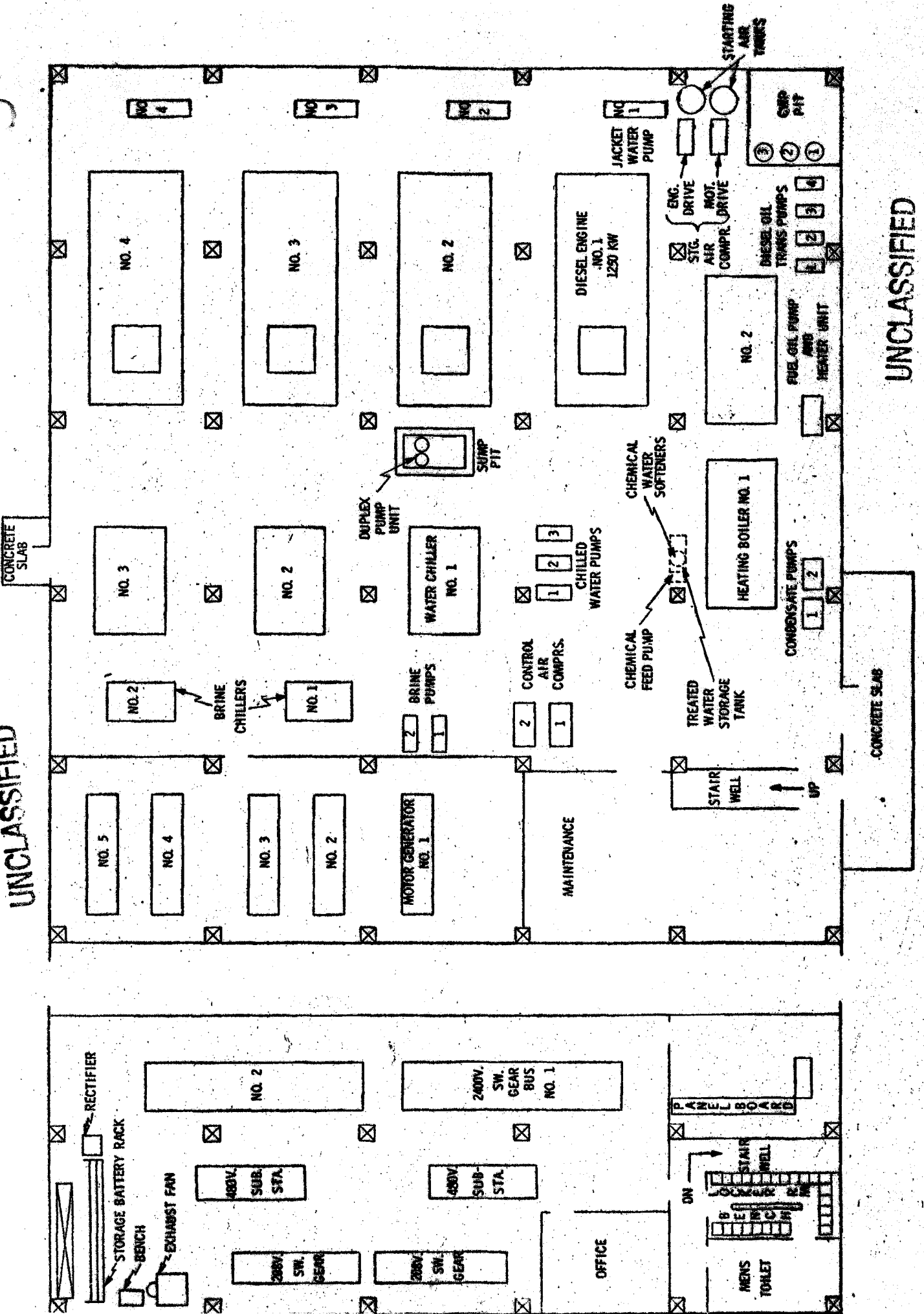
1ST FLOOR

POWER BUILDING

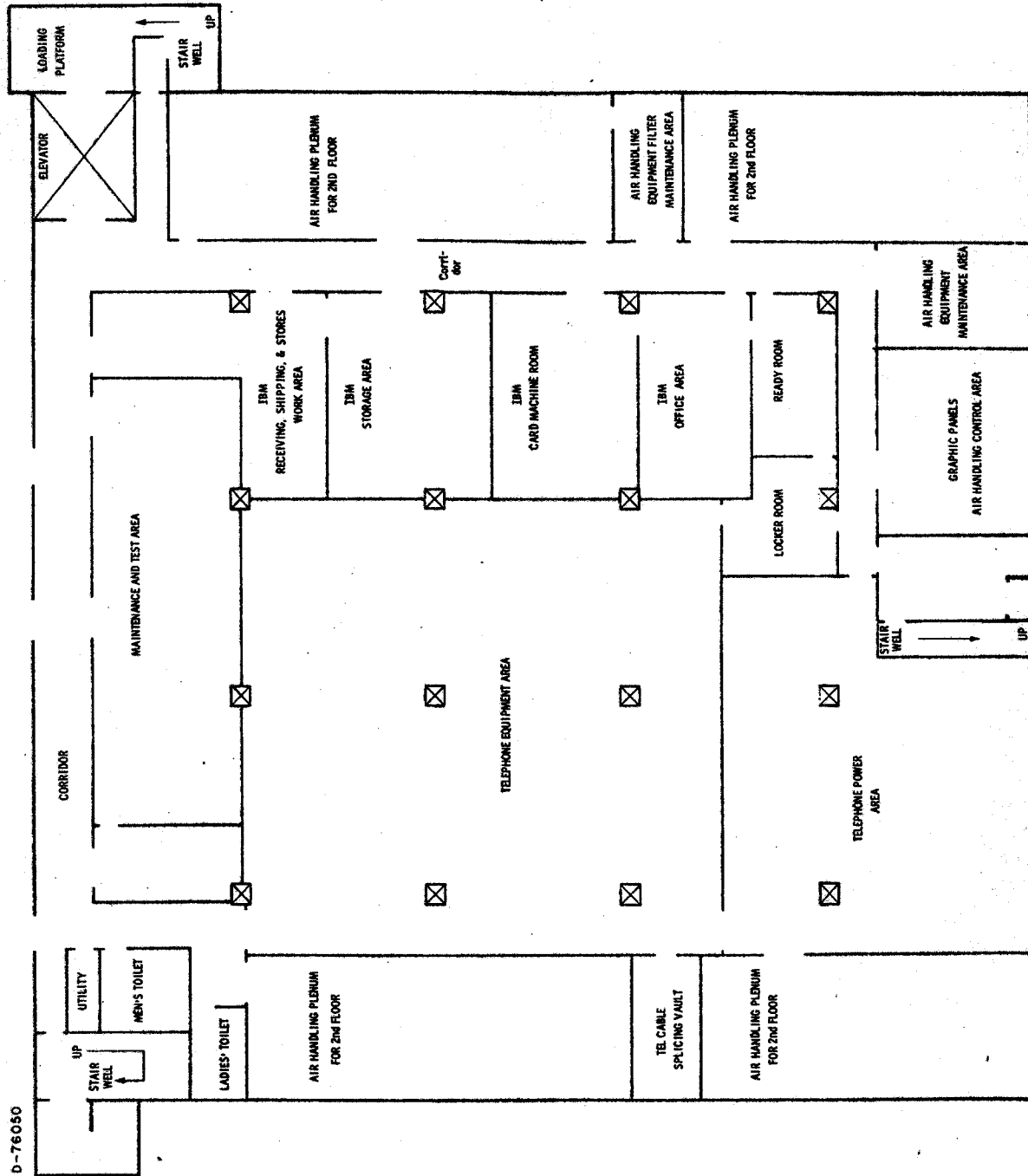
MACHINE SECTION CENTER

MEZZANINE

5049



D-76050



1st FLOOR  
McGUIRE DIRECTION CENTER

UNCLASSIFIED

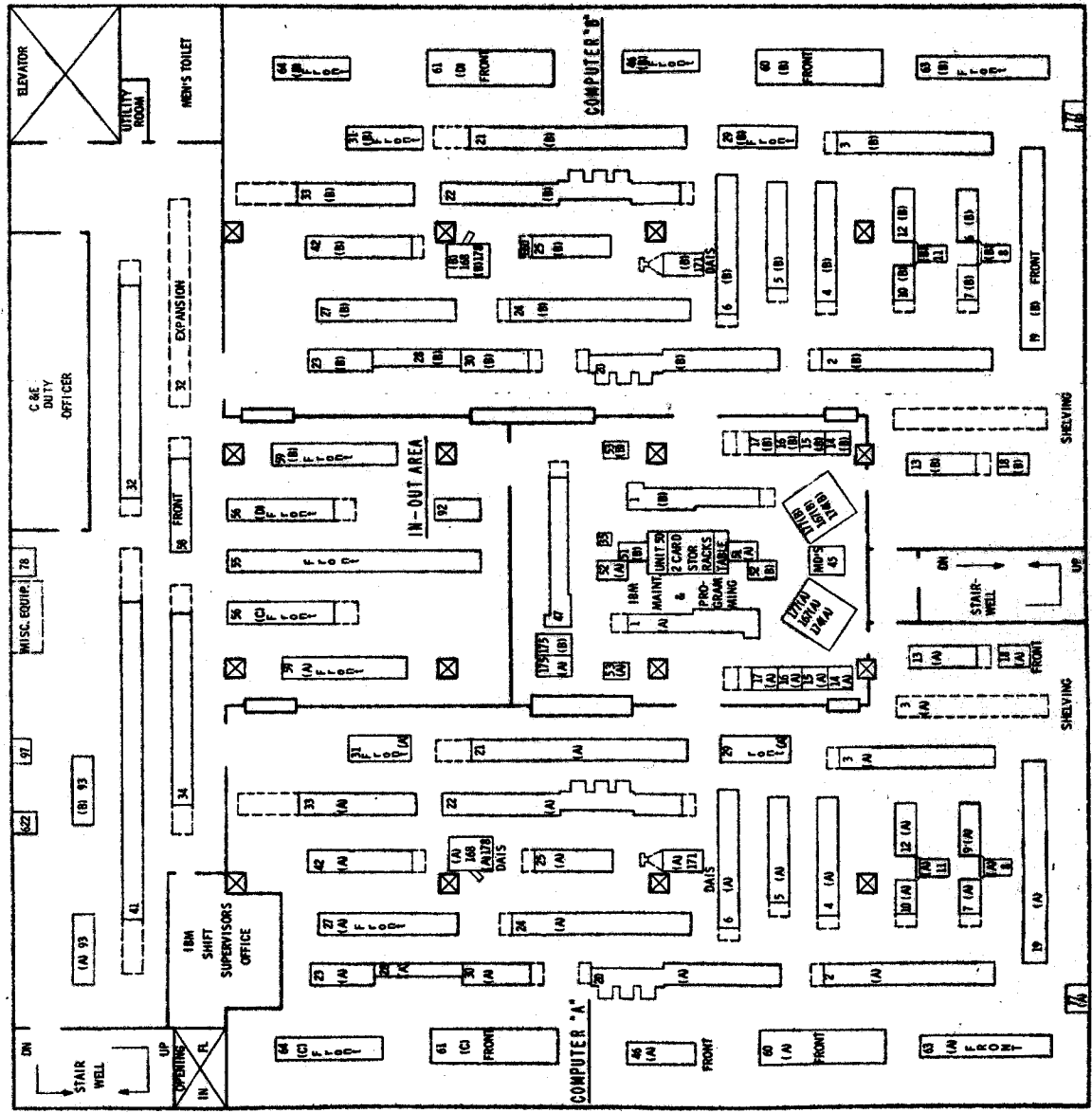
UNCLASSIFIED

UNCLASSIFIED

D-7603

**LEGEND**

IBM FRAME NO	DESCRIPTION
1	CONSOLE - DUPLEX MAINTENANCE
2	LEFT MAGNETIC DRUM
3	INSTRUCTION CONTROL UNIT
4	SELECTION CONTROL UNIT
5	COMPUTER PROGRAM UNIT
6	LEFT CORE MEMORY UNIT
7 & 10	CORE MEMORY ARRAY UNIT
8 & 11	RIGHT CORE MEMORY UNIT
9 & 12	MAGNETIC TAPE ADAPTER
13	18M 72 MAGNETIC TAPE UNIT
14 to 17	MAGNETIC TAPE POWER SUPPLY
18	MARGINAL CHECKING AND DISTRIBUTING UNIT
19	COMPUTER
20	AUXILIARY MAGNETIC DRUM UNIT
21	MAIN MAGNETIC DRUM CONTROL UNIT
22	MAGNETIC DRUM UNIT
23	MANUAL DATA INPUT UNIT
24	SYNCHRONIZATION GENERATOR
25	MARGINAL CHECKING AND DISTRIBUTING UNIT
26	DISPLAY, MANUAL INPUT, WARNING LIGHT
27	DATA STORAGE
28	MANUAL DATA INPUT INTERCONNECT UNIT
29	MARGINAL CHECKING AND DISTRIBUTING UNIT
30	MAIN DRUM
31	WARNING LIGHT DATA STORAGE UNIT
32	MARGINAL CHECKING & DISTRIBUTING UNIT, OUTPUT
33	CROSS-TELLING INPUT UNIT
34	OUTPUT STORAGE UNIT
35	MAPPER/ROUTER UNIT
36	LONG RANGE PERFOR. INPUT UNIT
37	CONTROL UNIT
38	CONSOLE, SWITCHING, MAINTENANCE
39	MARGINAL CHECKING AND DISTRIBUTING UNIT
40	AUXILIARY DRUM
41	CONSOLE, SIMPLEX MAINTENANCE
42	IBM 4033 CARD READER
43	IBM 4033 CARD PUNCH
44	IBM 4033 CARD PUNCH
45	POWER DISTRIBUTING UNIT - SX INPUT
46	CIRCUIT BREAKER UNIT, SX INPUT
47	MARGINAL CHECKING AND DISTRIBUTING UNIT
48	MARGINAL CHECKING AND DISTRIBUTING UNIT, DUPLEX INPUT
49	POWER SUPPLY FOR DUPLEX EQUIPMENT
50	POWER SUPPLY FOR SIMPLEX EQUIPMENT
51	PCD UNIT FOR DUPLEX EQUIPMENT
52	PCD UNIT FOR SIMPLEX EQUIPMENT
53	MARGINAL CHECKING GENERATOR, DUPLEX EQUIPMENT
54	MARGINAL CHECKING GENERATOR, SIMPLEX EQUIPMENT
55	TEST PATTERN GENERATOR
56	CONTROL UNIT, LONG RANGE INPUT MONITOR
57	SIMPLEX DISTRIBUTION FRAME
58	CONSOLE SITUATION DISPLAY
59	SIX DISK SITUATION DISPLAY PANEL, PATCH, CONSOLE
60	CONSOLE SITUATION DISPLAY, WITH SEMI-AUTOMATIC CAMERA ATTACHMENT
61	CONSOLE, AUXILIARY DISPLAY
62	PANEL, PATCHING, SIGNAL DISTRIBUTION
63	PANEL, PATCHING, SIGNAL DISTRIBUTION
64	CONSOLE, LONG RANGE INPUT MONITOR



2nd FLOOR  
COMPUTER AREA  
McGUIRE DIRECTION CENTER

UNCLASSIFIED

A-75715

DECLASSIFIED

SIDE FRAME

(can be attached to any console for mounting switches)

ROWS OF INTERVENTION SWITCHES  
(allow the operator to give instructions to the computer)

OFF-CENTERING SWITCHES

(portions of the display can be selected for off-centering and expansion)

DIGITAL INFORMATION DISPLAY (in 5-in tube)

(presents tabular information on tracks, etc.; requested by operator or forced by the computer)

SITUATION DISPLAY (19 IN)

(plan-position display of radar data, tracks, flight plans, bases, geography, etc.)

AUDIBLE ALARM

(used by the computer to call operator's attention to particular situations by means of a light and buzzer)

TELEPHONE HANDSET

DISPLAY SELECTION SWITCHES  
(allow the operator to select those displays needed at the position)

SHELF

(back-illumination will be provided for viewing maps, code words, etc.)

EXPANSION CONTROL

(if set to normal, the operator views the whole area assigned to him; if set to expand or contract, an enlarged or condensed display is presented)

LIGHT GUN

(radar data, tracks, or other items on the situation display can be selected for action by the computer)

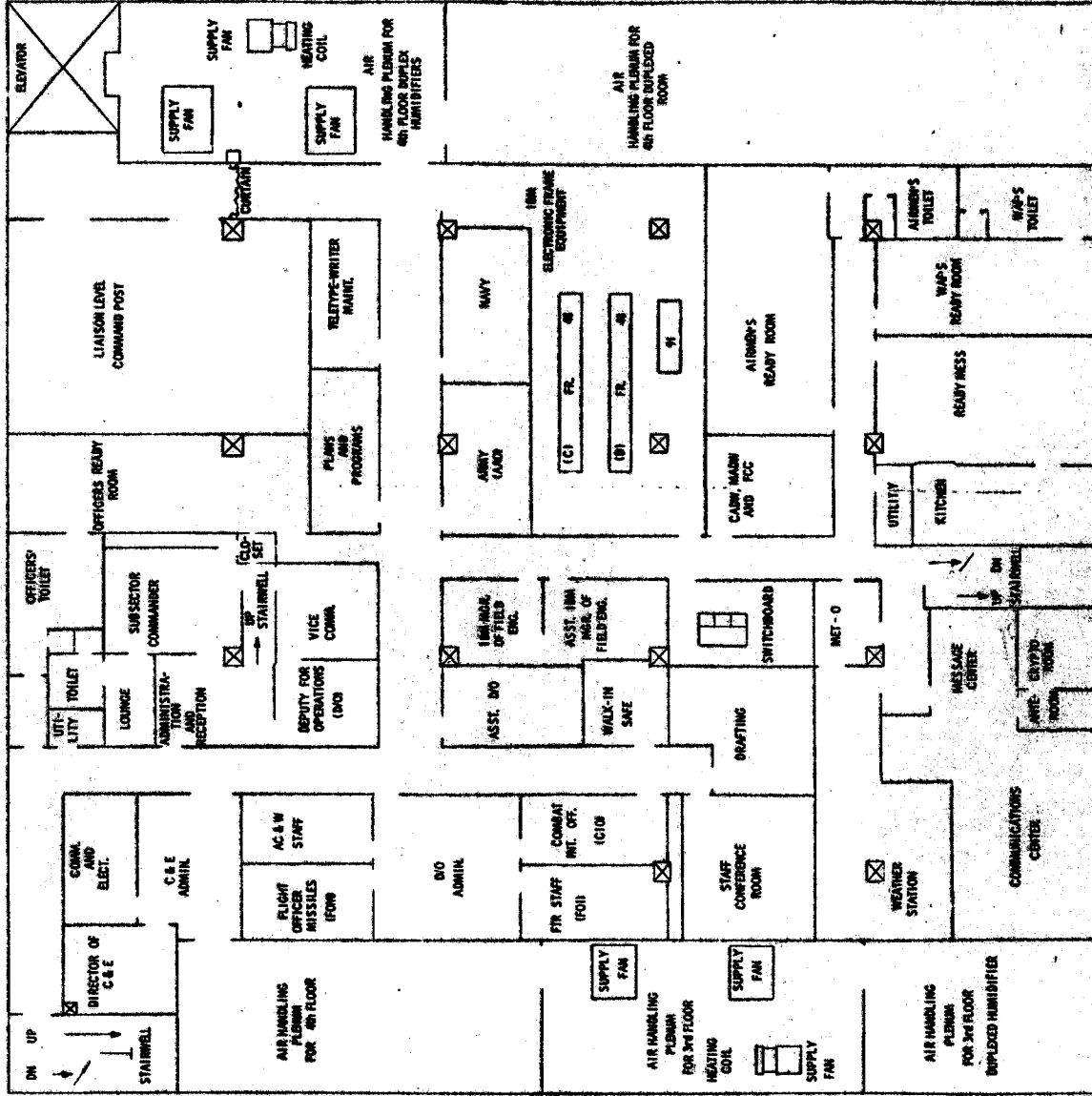
INTERCOM DIAL AND SELECTION SWITCHES

(direct lines to other operating positions are provided if necessary; any position can be dialed)

### FACILITIES AT A TYPICAL SITUATION-DISPLAY CONSOLE

DECLASSIFIED

UNCLASSIFIED



3rd FLOOR  
OFFICE AREA  
McGUIRE DIRECTION CENTER

UNCLASSIFIED

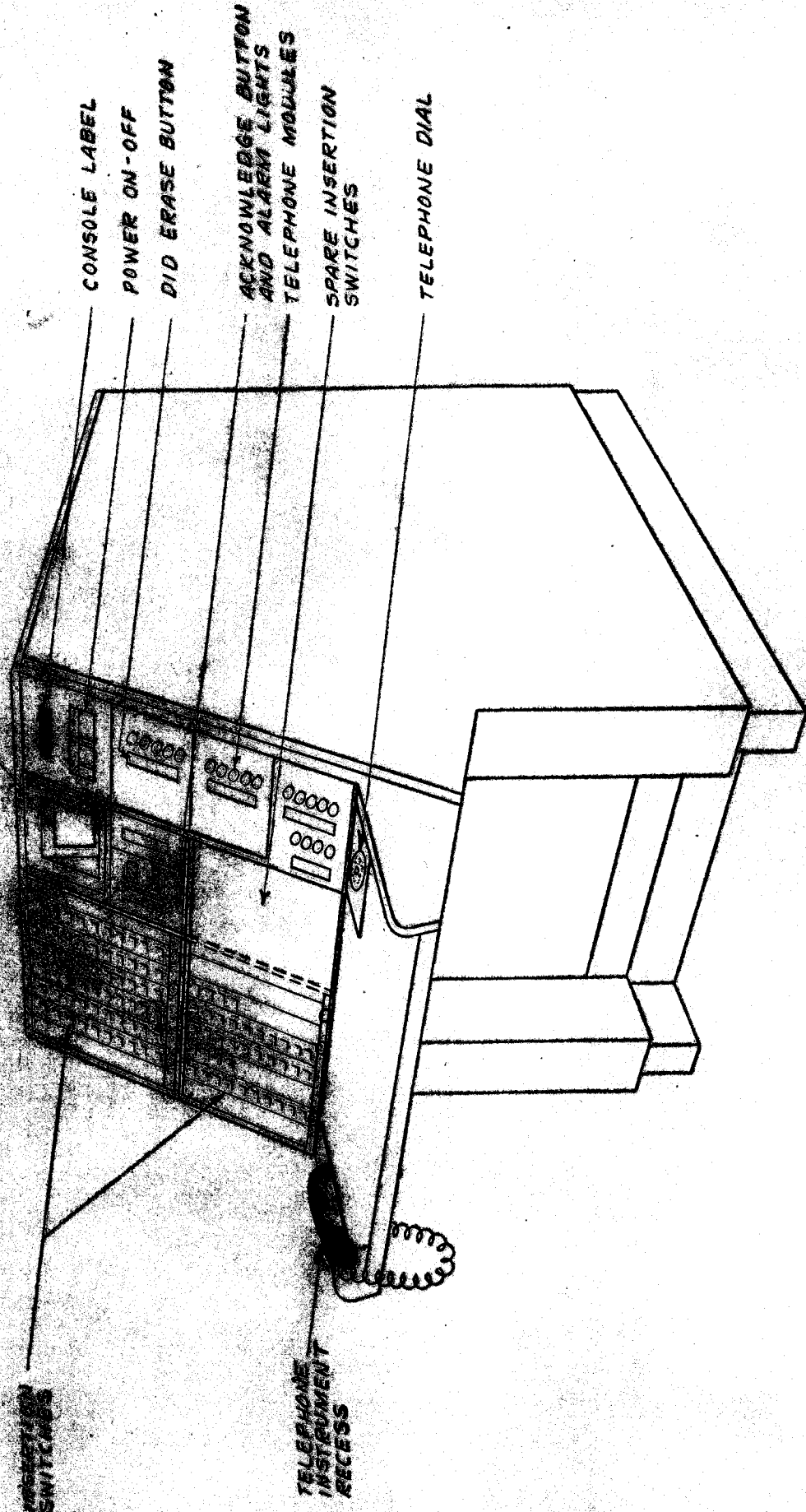
DESIGNATIONS	DESCRIPTION
A40	ANTI AIRCRAFT OFFICER
ACAW	AIRCRAFT CONTROL AND WARNING
CLE	COMMUNICATIONS AND ELECTRONICS
C10	COMBAT INTELLIGENCE OFFICER
B10	DEPUTY FOR OPERATIONS
FOI	FLIGHT OFFICER - INTERCEPTION
POI	FLIGHT OFFICER - MISSILES

IBM FRAME NO	DESCRIPTION
48	CIRCUIT BREAKER UNIT, DISPLAY CONSOLE
91	WARNING LIGHT INTERCOM UNIT

DECLASSIFIED

DIGITAL INFORMATION DISPLAY



DECLASSIFIED

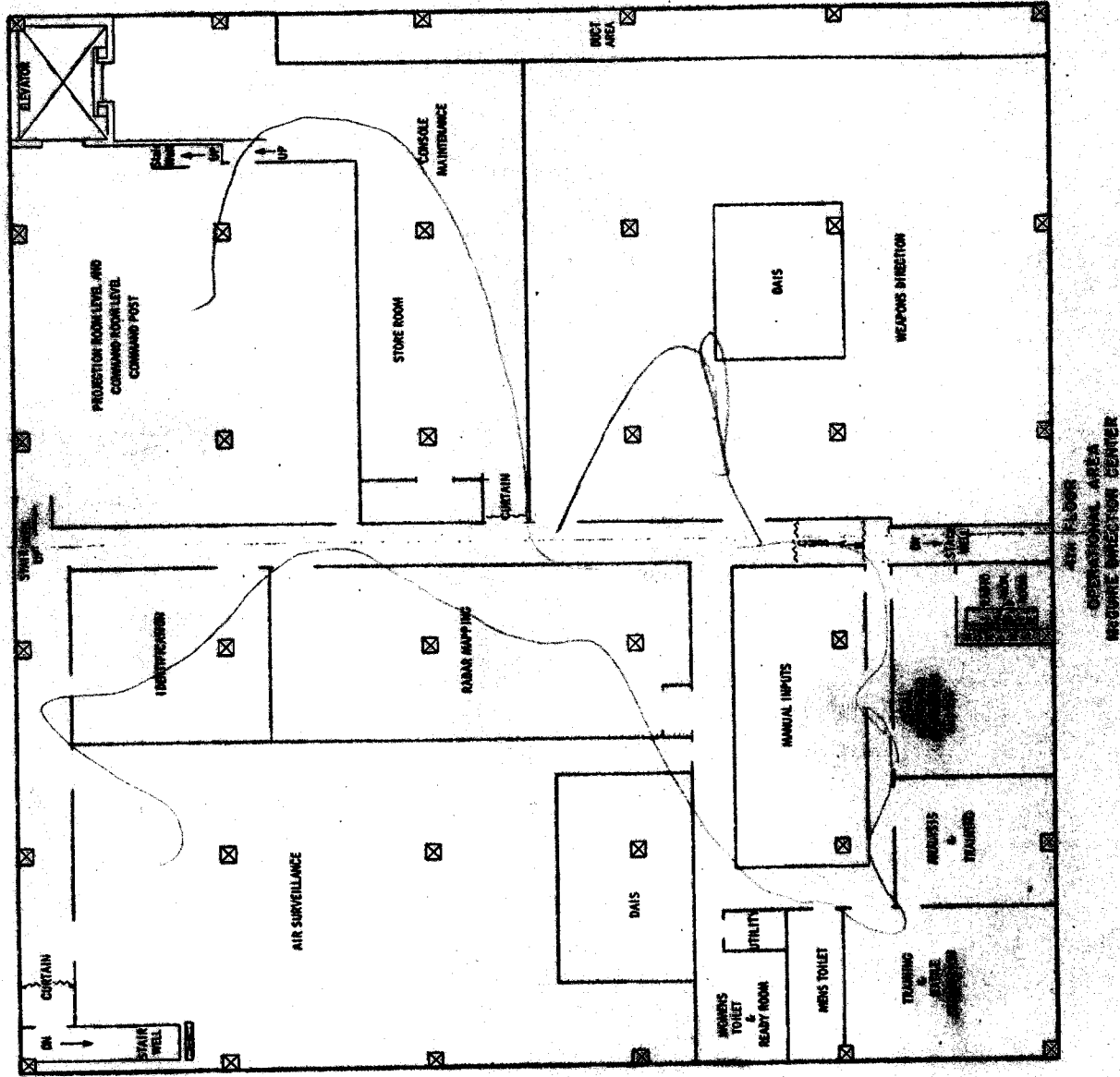
FIG. 12

AUXILIARY CONSOLE

C



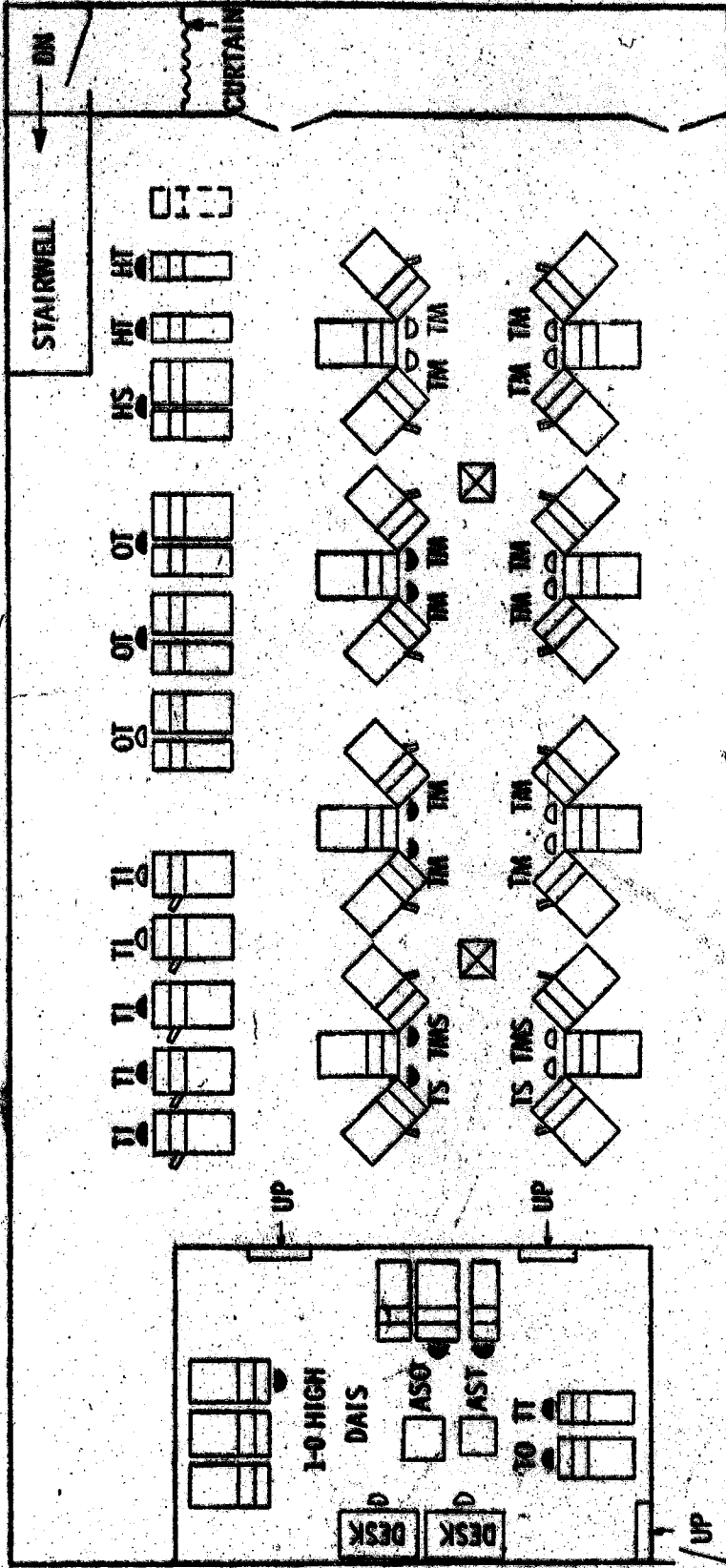
UNCLASSIFIED



UNCLASSIFIED

D-76053

DECLASSIFIED



- OCCUPIED CONTINUOUSLY
- OCCUPIED DURING DUTY CONDITIONS
- ✓ WING UNIT
- ASO AIR SURVEILLANCE OFFICER
- AST AIR SURVEILLANCE TECHNICIAN
- TT TRACKING TECHNICIAN
- TS TRACKING SUPERVISOR
- TM TRACK MONITOR
- TO TRACKING OFFICER
- TI TRACK INITIATOR
- OT OVERLAP TECHNICIAN
- HS HEIGHT SUPERVISOR
- HT HEIGHT TECHNICIAN

4th FLOOR  
 AIR SURVEILLANCE ROOM  
 MCGUIRE DIRECTION CENTER

DECLASSIFIED